

PR334 Women's Long Sleeve Signature Oxford Blouse

Description

Premier's long sleeve Signature Oxford blouse comes in a cotton rich Oxford weave fabric. This blouse offers a semi-fitted styling for the wearer with bust and back darts, a rounded bottom hem and soft collar detail on the neckline.

Product Features:

- Soft collar styling
- Semi-fitted styling with bust and back darts
- Rounded bottom hem
- Two button adjustable cuff

Available In:

8, 10, 12, 14, 16, 18, 20, 22, 24, 26

Certifications:

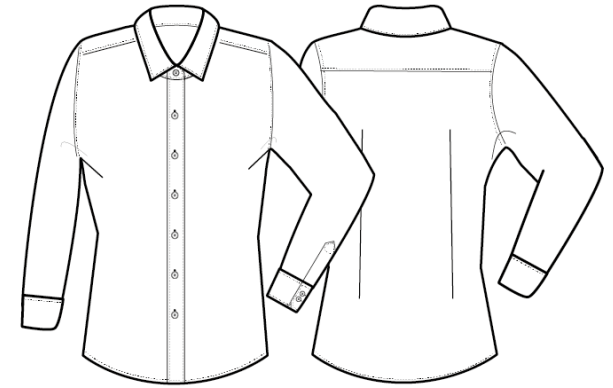


Colours:

Colour	Pantone	C	M	Y	K
Black	Black c	0	0	0	100
Light Blue	658C	37	11	0	0
Silver	Cool Gray 7C	20	14	12	40
White	White	0	0	0	0

Fabric:

70% Cotton, 30% Polyester Oxford Weave, 135gsm.



Suggested Decoration:

Screen Print, Transfer Print, Embroidery

Country of Origin:

Bangladesh

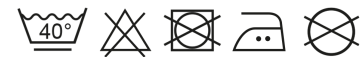
Commodity Code:

6206 30 0000

Features:



Wash Care:



Carton Information:

Sizes	Carton	Pack	SKU's	Carton Weight	Carton Dimensions
8-20	24	6	28	6.7kg	56cmx36cmx15cm
22-26	12	3	12	3kg	36cmx28cmx15cm

Garment Sizes:

Size	8	10	12	14	16	18	20	22	24	26
Bust to fit"	33	35	37	39	41	43	45	47	49	51
Bust to fit cm	84	89	94	99	104	109	114	119	124	129
Bust actual cm	92	97	102	107	112	117	122	129	134	139
Call size	XS	S	M	L	XL	2XL	3XL	4XL	5XL	6XL
Back length cm	66	66.5	67	67.5	68	68.5	69	69.5	70	70.5